

# WINSTON TRAILS PARCEL ELEVEN PHASE II

PART OF WINSTON TRAILS P.U.D.  
SITUATE IN SECTION 2, TOWNSHIP 45 SOUTH, RANGE 42 EAST  
PALM BEACH COUNTY, FLORIDA  
NOVEMBER, 1997 SHEET 5 OF 6

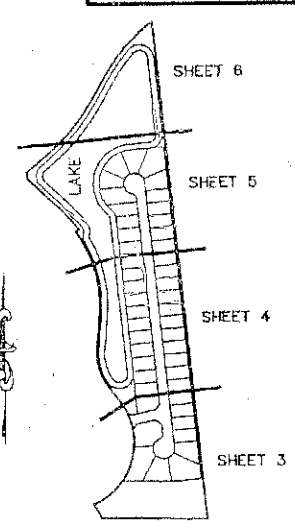
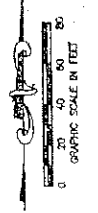
### NOTES:

1. THE COORDINATES SHOWN HEREON ARE STATE PLANE GRID COORDINATES ACCORDING TO THE TRANSVERSE MERCATOR PROJECTION OF THE FLORIDA EAST ZONE, N.A.D. 83, PER THE 1990 ADJUSTMENT.
2. THE LINEAR DIMENSIONS SHOWN HEREON ARE GROUND DISTANCES IN U.S. FEET AND DECIMAL PARTS THEREOF.
3. THE GROUND DISTANCE TO GRID DISTANCE SCALE FACTOR IS 1.0000488 (GROUND DISTANCE X SCALE FACTOR = GRID DISTANCE).
4. ALL LINES WHICH INTERSECT CURVES ARE RADIAL TO THOSE CURVES UNLESS OTHERWISE NOTED.

0587-024

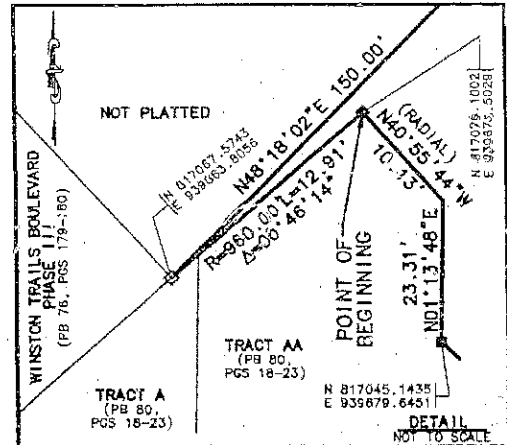
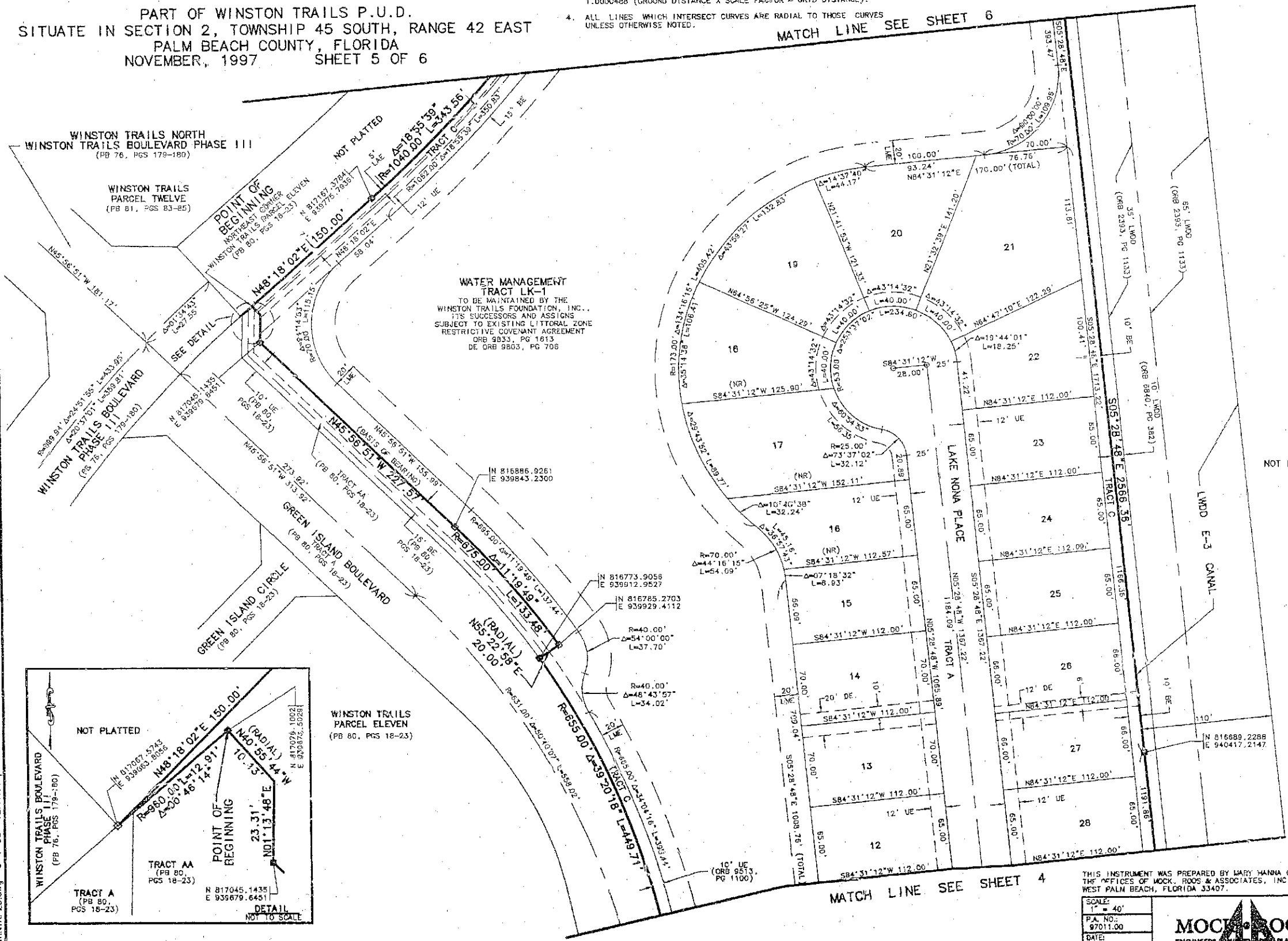
188

STATE OF FLORIDA  
COUNTY OF PALM BEACH  
THIS PLAT WAS FILED FOR  
RECORD \_\_\_\_\_ DAY OF \_\_\_\_\_  
AD, 1997 AND DULY RECORDED  
IN PLAT BOOK \_\_\_\_\_ ON PAGES  
\_\_\_\_\_ AND \_\_\_\_\_  
DOROTHY H. WILKER, CLERK  
BY: \_\_\_\_\_, D.C.



SHEET INDEX MAP  
NOT TO SCALE

- ### LEGEND
- L ARC LENGTH
  - BE BUFFER EASEMENT
  - Δ CENTRAL (DELTA) ANGLE
  - DE DRAINAGE EASEMENT
  - LWD LAKE WORTH DRAINAGE DISTRICT
  - LAE LIMITED ACCESS EASEMENT
  - LMAE LAKE MAINTENANCE EASEMENT
  - ORB OFFICIAL RECORD BOOK
  - PS PLAT BOOK
  - PS(S) PAGE(S)
  - R RADIUS
  - LMAE LAKE MAINTENANCE ACCESS EASEMENT
  - UE UTILITY EASEMENT
  - FC FERRAMENT CONTROL POINT
  - SET PS# 4763
  - 4x4 CONCRETE PERMANENT REFERENCE MONUMENT SET PS# 4763
  - 4x4 CONCRETE PERMANENT REFERENCE MONUMENT FOUND PS# 4763
  - C CENTERLINE
  - (NR) NON-RADIAL



WINSTON TRAILS  
PARCEL ELEVEN  
(PB 80, PGS 18-23)

THIS INSTRUMENT WAS PREPARED BY LARY HANNA CLODFELTER, P.S.M., IN THE OFFICES OF MOCK, ROOS & ASSOCIATES, INC., 5721 CORPORATE WAY, WEST PALM BEACH, FLORIDA 33407.

SCALE:  
1" = 40'  
P.A. NO.:  
97011.00  
DATE:  
NOVEMBER 1997  
DRAWING NO.:  
45-42-02-88



WINSTON TRAILS  
PARCEL ELEVEN PHASE II  
PART OF WINSTON TRAILS P.U.D.  
SITUATE IN SECTION 2, TOWNSHIP 45 SOUTH,  
RANGE 42 EAST  
PALM BEACH COUNTY, FLORIDA

SHEET 5 OF 6

WINTRP23.dwg 6-1-98 12:41:08 pm EST

REVISED: 01-09-98  
CAD FILE:  
DAVESWINTRP23